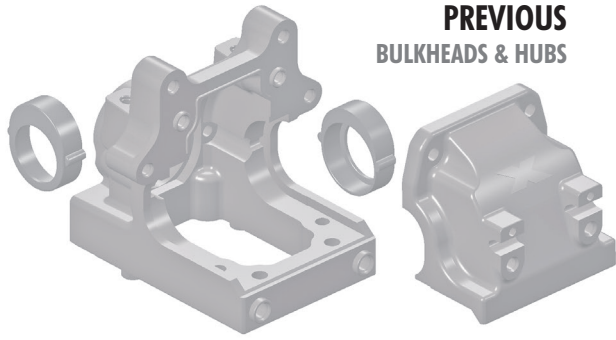
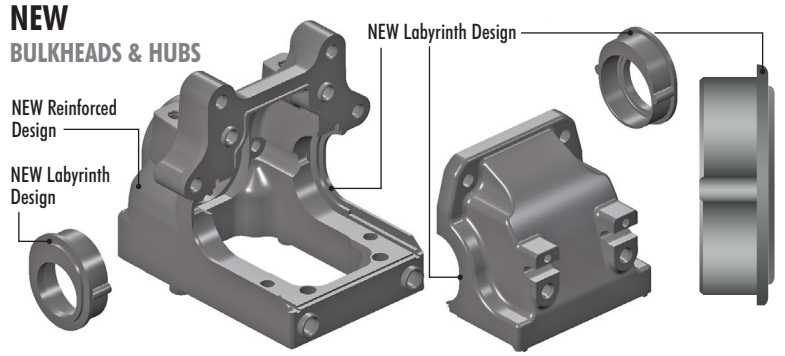


XRAY XB8 SUPPLEMENTARY SHEET

This Upgrade Kit includes reinforced Front & Rear Diff Bulkheads and Diff Height Inserts featuring new Labyrinth Dust Covers. Please follow these supplemental instructions during related assembly steps.



**PREVIOUS
BULKHEADS & HUBS**



**NEW
BULKHEADS & HUBS**

BALL-BEARING HUB POSITIONS

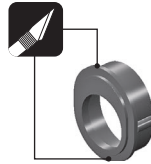
LOWER

CENTER

UPPER



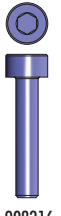
Cut off burr



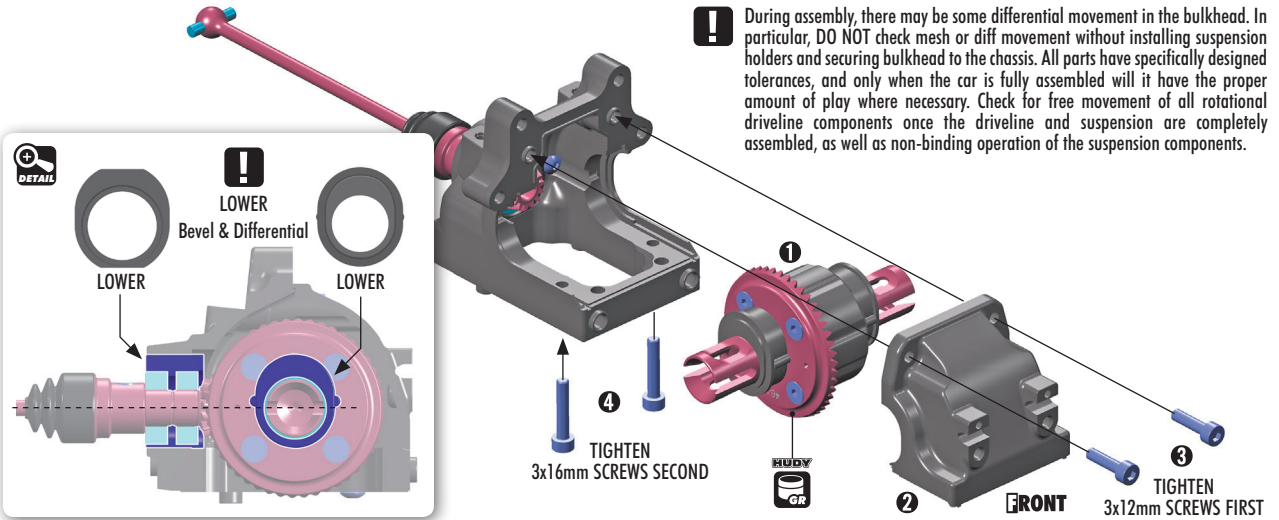
Cut off burr



908312
SCH M3x12

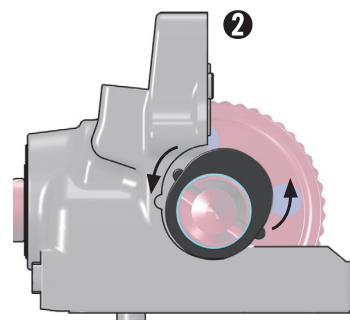
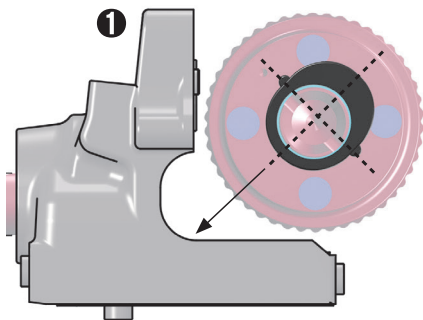


908316
SCH M3x16

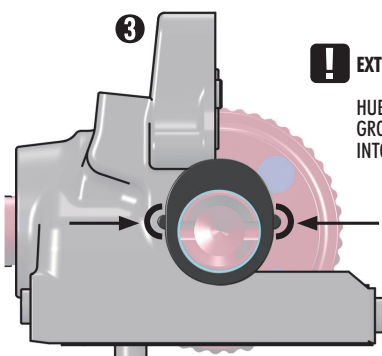


! During assembly, there may be some differential movement in the bulkhead. In particular, **DO NOT** check mesh or diff movement without installing suspension holders and securing bulkhead to the chassis. All parts have specifically designed tolerances, and only when the car is fully assembled will it have the proper amount of play where necessary. Check for free movement of all rotational driveline components once the driveline and suspension are completely assembled, as well as non-binding operation of the suspension components.

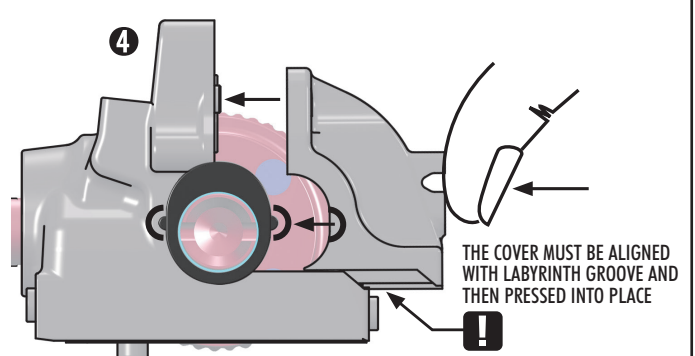
INSTALLING THE DIFFERENTIAL WHILE FIRST TIME BUILDING THE CAR



Check that left and right Diff Height Inserts are installed in the same orientation.



! **EXTREMELY IMPORTANT**
HUB MUST BE INSERTED IN GROOVE AND PROPERLY PRESSED INTO BULKHEAD.



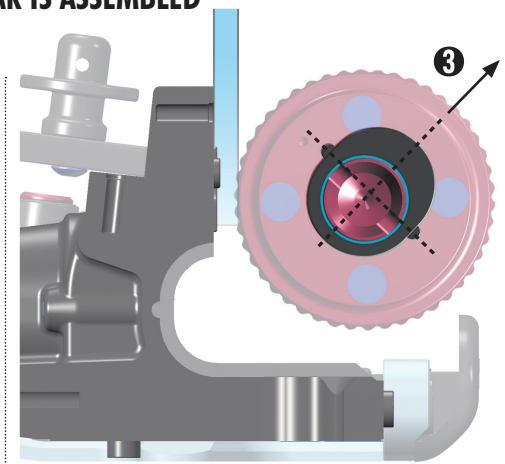
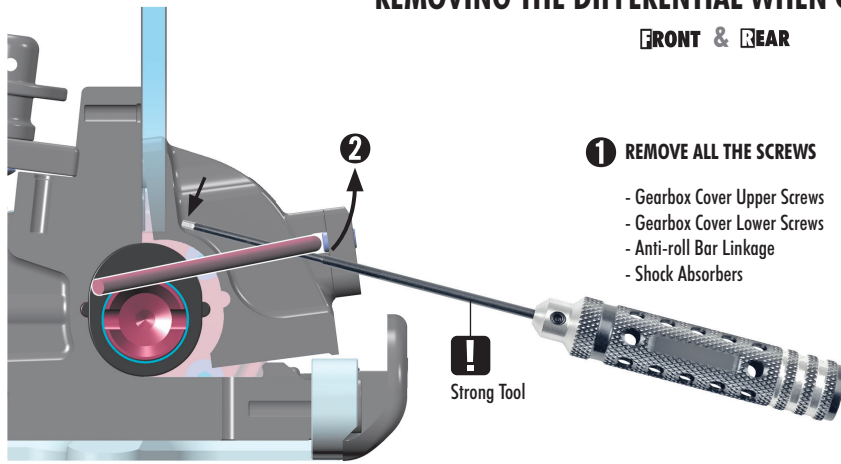
THE COVER MUST BE ALIGNED WITH LABYRINTH GROOVE AND THEN PRESSED INTO PLACE

REMOVING THE DIFFERENTIAL WHEN CAR IS ASSEMBLED

FRONT & REAR

1 REMOVE ALL THE SCREWS

- Gearbox Cover Upper Screws
- Gearbox Cover Lower Screws
- Anti-roll Bar Linkage
- Shock Absorbers



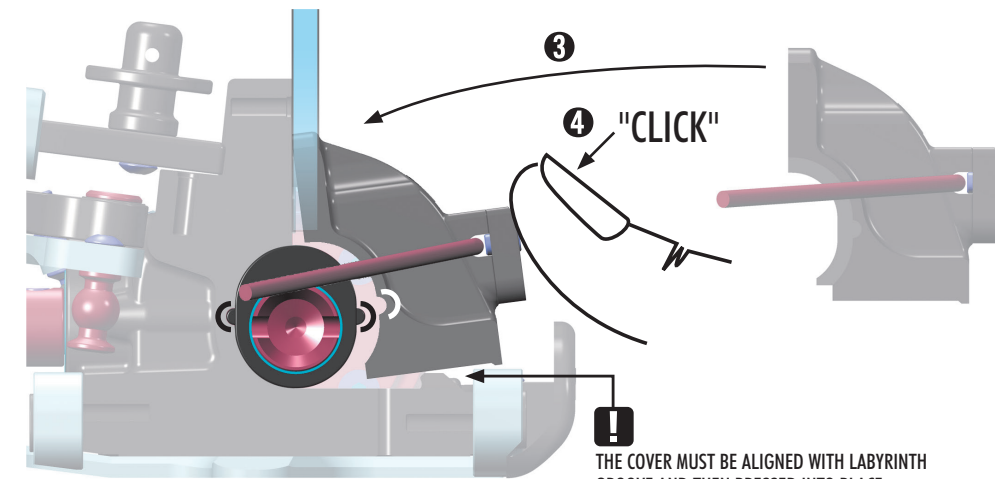
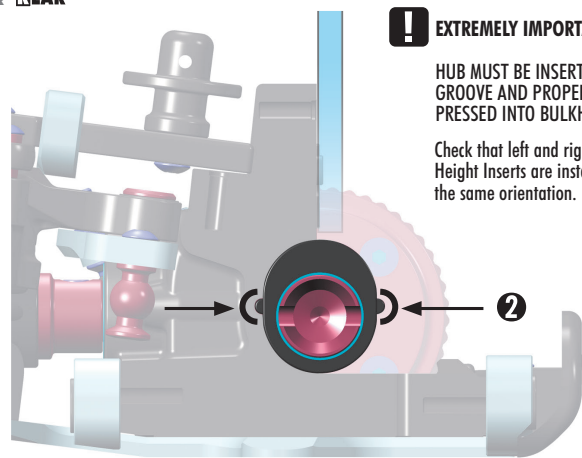
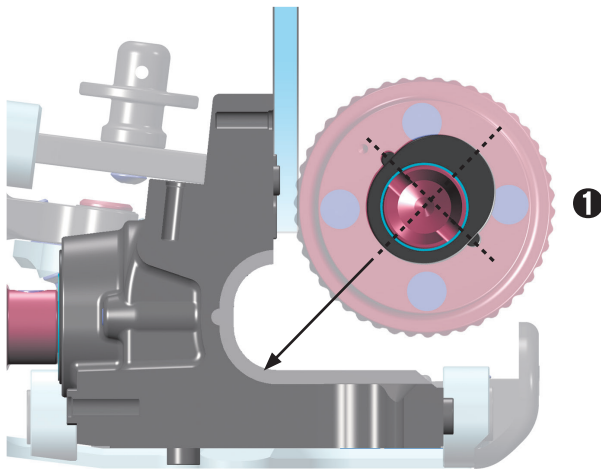
INSTALLING THE DIFFERENTIAL WHEN CAR IS ASSEMBLED

FRONT & REAR

! EXTREMELY IMPORTANT

HUB MUST BE INSERTED IN GROOVE AND PROPERLY PRESSED INTO BULKHEAD.

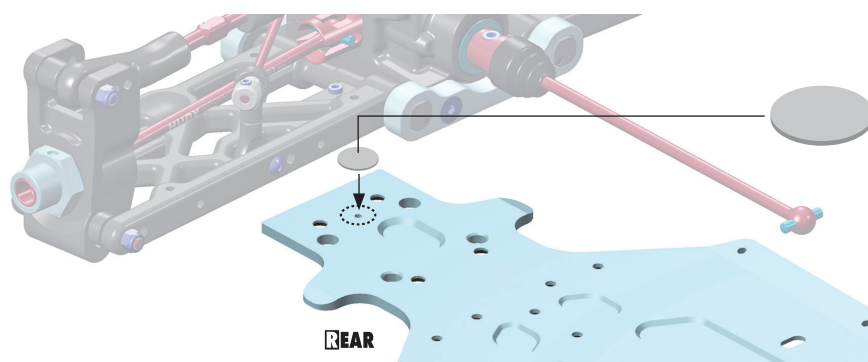
Check that left and right Diff Height Inserts are installed in the same orientation.



5 TIGHTEN ALL THE SCREWS

- Gearbox Cover Upper Screws
- Gearbox Cover Lower Screws
- Anti-roll Bar Linkage
- Shock Absorbers

! THE COVER MUST BE ALIGNED WITH LABYRINTH GROOVE AND THEN PRESSED INTO PLACE



TIP To prevent dust apply one of the included stickers on the rear part of the chassis to cover the center balancing hole.